



ANU Interhall Sport Program

2024 Operational Guidelines

Table of Contents

Introduction.....	1
1. Purpose of Operational Guidelines.	3
2. Purpose of the ANU Interhall Sport Program.....	3
3. Definitions.	3
4. Governance Structure of the ANU Interhall Sport Program.	5
5. Parameters of these guidelines.....	7
Responsibilities of ANU Sport.....	7
Operational Administration	7
6. Liaison with Residential Halls.	7
7. Liaison with Student Advisory Panel.	7
8. Appointment of program manager and Duty Officials.....	7
Competition Management	8
9. Program of sports.....	8
10. Sport format, rules, and regulations.	8
11. Scheduling.	8
12. Team entry requirements and participant eligibility.	8
13. Results.	9
14. First aid and medical provisions.	9
15. Appointment of match officials.....	9
16. Training times.....	10
Facility Requirements.....	10
17. Sport venues.....	10
Responsibilities of Residential Halls	10
18. Individual participant registration.....	10
19. Team entry requirements.	11
20. Eligibility of participants.....	11



ANU Sport & Recreation Association Inc.

The Australian National University

19 North Road

Acton ACT 2601

T: 02 6125 2273 | F: 02 6247 2572

sport@anu-sport.com.au | www.anu-sport.com.au

21. Ex-Resident Participation	11
22. Uniform and equipment.....	12
Responsibilities of Residential Experience	12
23. Extent of Partnership	12
Appendix.....	13
Team Entry Form	13
Dispute and Disciplinary Guidelines.....	13



Introduction

1. Purpose of the Operational Guidelines.

The purpose of these guidelines is to ensure that the ANU Interhall Sport program, the individual sports, and matches, under the control of ANU Sport are conducted in a consistent and efficient manner, in accordance with the sport rules and regulations.

The guidelines clearly outline the requirements and responsibilities of each of the following groups associated with the conduct of the ANU Interhall Sport Program:

- i. ANU Sport.
- ii. ANU Residential Experience Division.
- iii. Residential Halls.
- iv. Student Advisory Panel.

2. Purpose of the ANU Interhall Sport Program.

The ANU Interhall Sport program has been established to provide regular sporting competition across a variety of sports between the Residential Halls located on the ANU Acton campus. The aim of this program is to provide students living on campus an opportunity to represent their Residential Hall in a variety of sports, providing the opportunity for regular physical activity, in addition to developing a positive community and culture within the Halls.

The ANU Interhall Sport program has been developed as a replacement for the program previous Interhall Sport Organisation (ISO). Upon an ongoing review of the operational structure and governance model of ISO, the 2023 committee terminated the Organisation's existence, with the intention of a collaboration between ANU Sport and Residential Experience to facilitate an alternative sporting competition for students living on campus.

3. Definitions.

In this agreement, unless a contrary intention appears:

“ANU” means the Australian National University.



“ANU Interhall Sport Program” or **“Interhall Sport Program”** means any sport or recreation competition, event and activity facilitated by ANU Sport, in which students representing the Residential Halls participate.

“ANU Residential Experience Division” means the Division of ANU responsible for oversight and management of the ANU Residential Halls, excluding privately own Residential Halls John XXIII College and Burgmann Undergraduate and Postgraduate Village.

“ANU Sport” means the ANU Sport & Recreation Association Inc. and its directors, employees, volunteers, contractors, and agents.

“Competition” means one or more competitive sporting matches, facilitated by ANU Sport, between Residential Halls played as part of the ANU Interhall Sport Program.

“First Aid” means the emergency care or treatment given to a person, by a trained individual, prior to professional medical aid being obtained.

“Head of Hall” means the individual employed by a Residential Hall in the highest position of authority.

“Participant” means an individual who meets the eligibility criteria to participate in the ANU Interhall Sport Program.

“Participation Fee” means the fee determined by ANU Sport payable by each Residential Hall to ANU Sport by the due date set out in an invoice, as a pre-condition of participating in the ANU Interhall Sport Program.

“Residential Hall” or **“Hall”** means each residential and non-residential hall or college located at the ANU, namely: [Bruce Hall](#), [Burgmann Undergraduate and Postgraduate Village](#), [Burton & Garran Hall](#), [Fenner Hall](#), [Graduate House](#), [Griffin Hall](#), [John XXIII College](#), [Toad Hall](#), [UniLodge](#), [Ursula Hall](#), [Wamburun Hall](#), [Wright Hall](#), and [Yukeembruk Village](#).

“Sport Representative” means an authorised student representative of a Residential Hall.

“SSAF” means student services and amenities fee.

“Student Advisory Panel” means the panel made up of sports representative students elected by their respective Residential Hall.

“Qualified Instructor” means an individual who has a relevant qualification or equivalent to instruct or coach recognised by the relevant State Sporting Organisation or National Sporting Organisation of equivalent body.



4. Governance Structure of the ANU Interhall Sport Program.

In 2024, the governance of the Interhall Sport program will be a collaboration between ANU Sport, Residential Experience Division, and the Residential Halls. An advisory panel of students, comprising of the Sport Representatives from each participating Hall, will be consulted throughout the year to assist in the refinement of the program to meet the needs of this program.

ANU Sport will be responsible for management and operational delivery of the sports competitions, including but not limited to:

- i. Development and operational delivery of all sport competitions and related activities, excluding team training.
- ii. Appointment and management of match officials and match day duty managers for all competition matches.
- iii. Appointment and management of first aid and medical provisions during matches and competition days, including providing incident reporting to Halls following any medical incident that occurs during matches and competition days.
- iv. Management and reporting of any incident that occurs in association with a match or competition day, including both medical and disciplinary incidents.
- v. Management and reporting of any tribunal or disciplinary proceedings as a result of an incident directly related to match play and competitions, including breaches of eligibility.
- vi. Bookings and managing the competition venue, ensuring appropriate facilities are available for all matches and competitions days.
- vii. Financial responsibility for staffing required to facilitate the competitions within the Interhall Sport program, First Aid, facility hire for competitions and training (as outlined in these guidelines), match day officials, trophies, and any other operational cost that is responsibly required to facilities the Interhall Sport competitions.

Residential Experience and the Residential Halls will be responsible for the management and participation of the Teams and Participants, including but not limited to:

- i. Oversight and management of teams for each sport to represent the Hall in each sport.

- ii. Oversight and management to ensure eligibility of students representing the Hall.
- iii. Oversight and management of registration of participants and correct application of match entry forms.
- iv. Supporting ANU Sport in the implementation of sanctions relating match discipline.
- v. Supporting ANU Sport in the implementation of first aid / medical advice provided to participants.

The Student Advisory Panel will be responsible for providing advice and guidance to ANU Sport and Residential Experience regarding the operational delivery of the sports and matches, including but not limited to:

- i. Advising on the popularity of sports to be included in the annual program and provide recommendations on future changes.
- ii. Advising on the popularity of sports to be included as individual matches or competitions that not all Halls may participate – i.e. contact sports.
- iii. Advising on fixtures and scheduling to align with the University calendar and Hall events.
- iv. Providing feedback on the program from participants and Halls to assist in making the program fit for purpose.

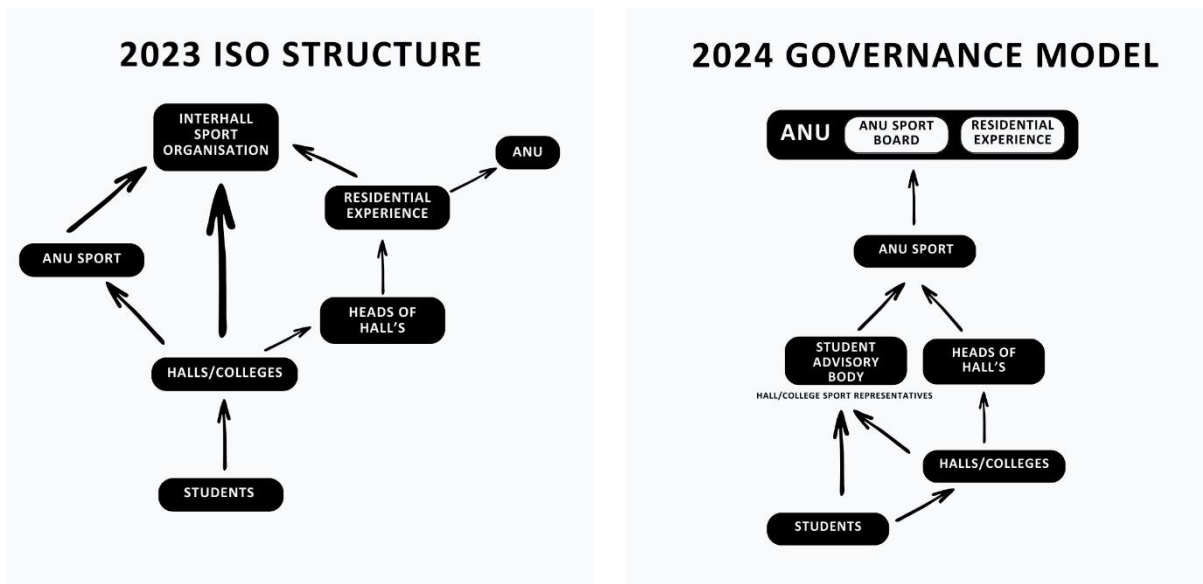


Figure 1: Governance Model Transition



5. Parameters of these guidelines.

These guidelines are to be read in conjunction with the ANU Interhall Sport program Memorandum of Understanding, and the sport specific rules and regulations as outlined for each sport.

ANU Sport, Residential Experience Division, and the University and Residential Halls may have additional policies, procedures, and guidelines and that should be referred to for specific information, including but not limited to:

- i. [ANU Sport's Member Protection Policy](#) and [Attachments](#).
- ii. ANU Sport's facility hire and use terms and conditions.
- iii. [The ANU's Student Code of Conduct](#).
- iv. Disputes and Disciplinary Guidelines.

Responsibilities of ANU Sport

Operational Administration

6. Liaison with Residential Halls.

ANU Sport will liaise with Residential Halls as deemed appropriate or when requested. Incidence involving player welfare, such as injury or behavioural, will be communicated by ANU Sport to the respective Residential Hall.

7. Liaison with Student Advisory Panel.

ANU Sport will endeavour to host five Student Advisory Panel meetings each calendar year. With a meeting taking place before the start of each academic term and after the conclusion of all competition.

8. Appointment of program manager and Duty Officials.

ANU Sport will appoint a permanent staff member to oversee the competition as program manager. The program manager will be appointed annually and will be the main point of contact for all operational needs of the program, including but not limited to management of the daily operations and competition management.

A Student Leadership in Sport Officer (SLSO) will be employed and responsible for supporting the daily operations of the program. In addition to the program manager and SLSO, several Duty Officials will be employed to monitor all competition participated in.



Competition Management

9. Program of sports

ANU Sport will set the program of sports for the calendar year based off the preferences communicated by the Residential Halls through the Student Advisory Panel. ANU Sport has sole discretion on program of sports which is implemented.

The program of sports in 2024 will include:

- i. AFL (contact)
- ii. [AFL 9's](#)
- iii. [Badminton](#)
- iv. [Basketball](#)
- v. Cricket
- vi. [Dodgeball](#)
- vii. Hockey
- viii. [Lawn Bowls](#)
- ix. [Netball](#)
- x. [Road Relay](#)
- xi. [Soccer](#)
- xii. [Table Tennis](#)
- xiii. [Tennis](#)
- xiv. [Touch Football](#)
- xv. [Ultimate Disc](#)
- xvi. [Volleyball](#)

10. Sport format, rules, and regulations.

ANU Sport will implement the program of sports utilising the format, rules, and regulations of its choosing. Unless otherwise stated in the respective rule document for a sport, the rules as outlined by the National Sporting Organisation (NSO) will be implemented. All sports which a run as a part of the program will have a rule book available on the [ANU Sport website](#).

11. Scheduling.

The scheduling of fixtures will be at the discretion of ANU Sport. All sports will take place during Semester. Attempts will be made to avoid particularly academic heavy periods such as exams.

12. Team entry requirements and participant eligibility.

ANU Sport will provide the necessary technology, processes, and training to Residential Halls to ensure that participants which take part in the Interhall Program

are eligible to do so and accurate records are kept for fixtures. See clause 18 and 19 for greater detail.

13. Results.

ANU Sport will keep record of all results from competition and will publish on the [ANU Sport website](#). With input from the Student Advisory Panel, each sport will be allocated to a point tier which contribute to the overall Sport Shield. In allocating the program of sports to a tier, consideration will be given to the number of participants participating and ability for all Residential Halls to participate.

The current point tiers are as follows:

	Tier 1 (Team)	Tier 2 (Individual/Duo)	Tier 3 (Social)	TBD
Sports Allocated	AFL 9's Basketball <i>*Inward Bound</i> Netball (F/NB) Soccer Touch Football Ultimate Disc Volleyball	Badminton Road Relay Table Tennis Tennis	Dodgeball Lawn Bowls Mixed Netball	AFL (contact) Cricket Hockey
Point Breakdown	1 st – 45 2 nd – 39 3 rd – 34 4 th – 30 5 th – 26 6 th – 22 7 th – 19 8 th – 16 9 th – 13 10 th – 10 11 th – 5 12 th – 3 DNP – 0	1 st – 30 2 nd – 26 3 rd – 23 4 th – 20 5 th – 17 6 th – 14 7 th – 11 8 th – 9 9 th – 7 10 th – 5 11 th – 3 12 th – 1 DNP – 0	1 st – 20 2 nd – 17 3 rd – 14 4 th – 11 5 th – 9 6 th – 7 7 th – 6 8 th – 5 9 th – 3 10 th – 2 11 th – 1 12 th – 0 DNP – 0	

**Inward Bound is not facilitated by ANU Sport*

14. First aid and medical provisions.

ANU Sport will ensure Duty Officials hold the relevant first aid qualifications and are present at all competition. For sports deemed by ANU Sport to hold a higher risk profile, a third-party first aid provider may be utilised.

15. Appointment of match officials.

ANU Sport will be responsible for the appointment of match officials. Match officials will be paid. In the circumstance that ANU Sport is unable to appoint a match official,



it will be the responsibility of the Residential Halls participating in the fixture to provide match officials.

ANU Sport will collect expression of interests from students who wish to be match officials through the following [form](#).

16. Training times.

Each Residential Hall will receive up to two hours facility access for training per team, for the length of the competition. Training bookings are at the discretion of ANU Sport and facility availability. All training bookings are to be made through the program manager appointed by ANU Sport.

Facility Requirements

17. Sport venues.

ANU Sport will allow use of its facilities for trainings and fixtures in-kind and at their discretion. Sport venues which are utilised by the Interhall Program are:

- i. North Oval
- ii. South oval
- iii. Willows Oval
- iv. Fellows Oval
- v. New Hall
- vi. Old Hall

If required and at their discretion, ANU Sport may utilise sport venues it does not manage off-campus.

Responsibilities of Residential Halls

18. Individual Participant registration.

All participants who wish to represent their Hall in the Interhall Program must complete an Individual Participation Registration.

It is the responsibility of the Residential Hall to ensure that participants complete the registration. The individual participant registrations will enable ANU Sport to send a list of names that enables team entry forms to be prepopulated.¹

¹ In 2025 this process will be improved through having Residential Halls act as a 'Club' on UniOne. Individual registrations will occur as a membership, not as a product as the case in 2024. This will allow Sport Representatives to act as administrators of the UniOne Club, easily accessing the necessary information to populate team sheets, which will transition from paper in 2024, to an online form in 2025.



19. Team entry requirements.

Residential Halls will be required to submit a team sheet prior to every fixture which includes the names of those registered participants who will be representing their Hall. Team sheets will be available to Residential Halls prior to each match or can be prepopulated and submitted to the program manager via email prior.

20. Eligibility of participants.

Students will be eligible to participate in the program of sports if they are:

- i. currently enrolled as a student at the ANU;
- ii. currently a resident or member of a Residential Hall, or meets the requirement as an ex-resident as outlined below and with the approval of the relevant Head of Hall;
- iii. aged 17 or over;
- iv. there are no medical reasons which would make participation unreasonable or unsafe to that individual or any other Participants; and
- v. there are no disciplinary reasons prohibiting the individual from participating.

It is the responsibility of the Residential Hall to verify the eligibility of students participating in the program of sports representing their Residential Hall. If the Residential Hall becomes aware that a student is not eligible to participate, they must contact the ANU Sport program manager immediately.

Residential Halls will be penalised for fielding an ineligible ex-resident at the discretion of ANU Sport. This could range from team disqualification for the duration of the competition to an official warning.

21. Ex-Resident Participation

Ex-residents will be permitted to participate in the program of sports so long as they are currently enrolled at the ANU and previously resided at the Residential Hall whom they are participating with.

ANU Sport and Residential Experience have full discretion to change the eligibility requirements of ex-residents, in consultation with the Student Advisory Body. For an ex-resident to participate in the program of sports the written approval must be sought from ANU Sport and the Head of Hall. To obtain written approval from ANU Sport an email must be sent to the program manager containing:

- i. Ex-residents name.
- ii. University ID number of the ex-resident.
- iii. Ex-Resident proof of enrolment.
- iv. Head of Hall Approval.



No more than one ex-resident may participate in a fixture at any one time.

22. Uniform and equipment.

Residential Halls are required to provide a uniform to be worn by participants in the colour/colours of their residence.

<i>Hall</i>	<i>Primary Colour</i>	<i>Secondary Colour</i>	<i>Tertiary Colour</i>
<i>Bruce Hall</i>	Blue	White	Red
<i>Burgmann College</i>	Yellow	White	Black
<i>Burton & Garran Hall</i>	Red	Black	White
<i>Fenner Hall</i>	Maroon	Green	White
<i>Griffin Hall</i>	Blue	Yellow	White
<i>John XXIII College</i>	Light Blue	White	Red
<i>Toad Hall</i>	Gold	Purple	White
<i>UniLodge</i>	White	Red	Black
<i>Ursula Hall</i>	Dark Green	White	Black
<i>Wamburun Hall</i>	Orange	Purple	Black
<i>Wright Hall</i>	Black	Gold	White
<i>Yukeembruk Village</i>	Turquoise	Black	Gold

It is the responsibility of the Residential Hall to inform residents on equipment requirements.

Responsibilities of Residential Experience Division

23. Extent of partnership.

The ANU Residential Experience Division works in partnership with ANU Sport to provide operational oversight to the ANU Interhall Sport Program. The Residential Experience Division, with the support of ANU Sport, can mandate sport training and safety requirements with ANU Sport. The Residential Experience Division will be utilised to carry out discipline measurers as necessary.



ANU Sport & Recreation Association Inc.

The Australian National University

19 North Road

Acton ACT 2601

T: 02 6125 2273 | F: 02 6247 2572

sport@anu-sport.com.au | www.anu-sport.com.au

Appendix

Disputes and Disciplinary Guidelines

A copy of the Disputes and Disciplinary Guidelines are available here.

Team Entry Form

A copy of the Team Entry Form can be accessed here.